

# TENTH JUDICIAL DISTRICT



Churchill County Courthouse

## TENTH JUDICIAL DISTRICT CASELOAD FILINGS AND DISPOSITIONS Fiscal Year 2022

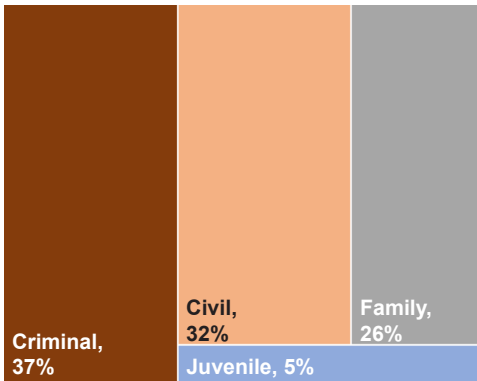
| Court                           | Criminal Filings <sup>a</sup> | Civil Filings | Family Filings <sup>b</sup> | Juvenile Filings <sup>b</sup> | Reopened Cases | Total Cases  | Total Disposed | Disp. Rate | Traffic and Parking <sup>c</sup> |              |            |
|---------------------------------|-------------------------------|---------------|-----------------------------|-------------------------------|----------------|--------------|----------------|------------|----------------------------------|--------------|------------|
|                                 |                               |               |                             |                               |                |              |                |            | Cases                            | Disposed     | Disp. Rate |
| Churchill County District Court | 196                           | 157           | 608                         | 109                           | 502            | 1,572        | 1,547          | 98%        | 72                               | 74           | 103%       |
| New River Justice Court         | 725                           | 808           | -                           | -                             | 21             | 1,554        | 1,558          | 100%       | 3,774                            | 3,725        | 99%        |
| Fallon Municipal Court          | 253                           | 1             | -                           | -                             | 1              | 255          | 197            | 77%        | 348                              | 306          | 88%        |
| <b>TOTAL</b>                    | <b>1,174</b>                  | <b>966</b>    | <b>608</b>                  | <b>109</b>                    | <b>524</b>     | <b>3,381</b> | <b>3,302</b>   | <b>98%</b> | <b>4,194</b>                     | <b>4,105</b> | <b>98%</b> |

<sup>a</sup> Criminal includes felony, gross misdemeanor, non-traffic misdemeanor, and criminal appeal (District Court only) filings.

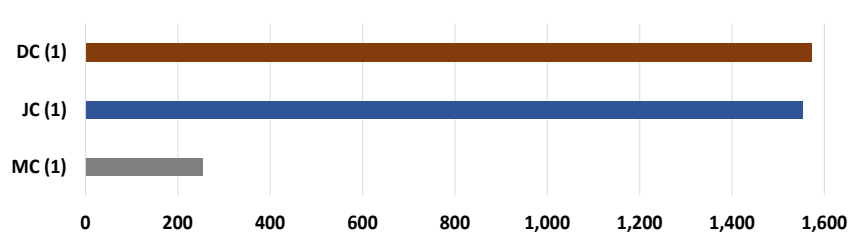
<sup>b</sup> Family and Juvenile case types only heard in District Courts.

<sup>c</sup> Traffic and Parking includes juvenile traffic statistics.

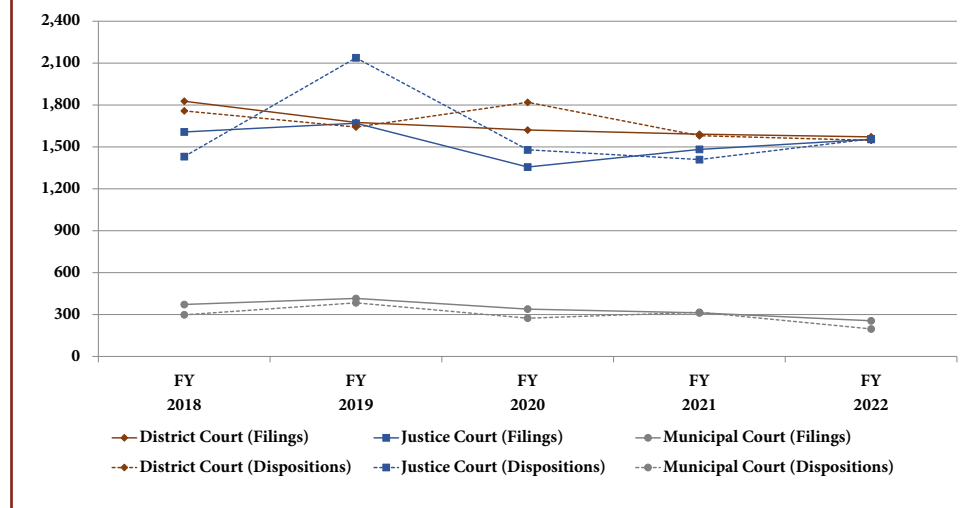
### NON-TRAFFIC CASE DISTRIBUTION



### NON-TRAFFIC TOTAL CASES PER JUDGE



### TENTH JUDICIAL DISTRICT NON-TRAFFIC CASES AND DISPOSITIONS FISCAL YEARS 2018-22



### District Demographics

Population: 26,310 <sup>a</sup>

Geographic Size: 4,930 sq. mi. <sup>b</sup>

Population Density: 5/sq. mi.

Most Populous Township: New River

<sup>a</sup> Source: Nevada State Demographer

<sup>b</sup> Source: U.S. Census Bureau

**QUICK  
FACTS**

**1%**

**OF STATEWIDE NON-TRAFFIC CASELOAD**

**1%**

**OF STATEWIDE TRAFFIC CASELOAD**