

DESIGNATED GROUNDWATER BASINS OF NEVADA

OREGON

IDAHO

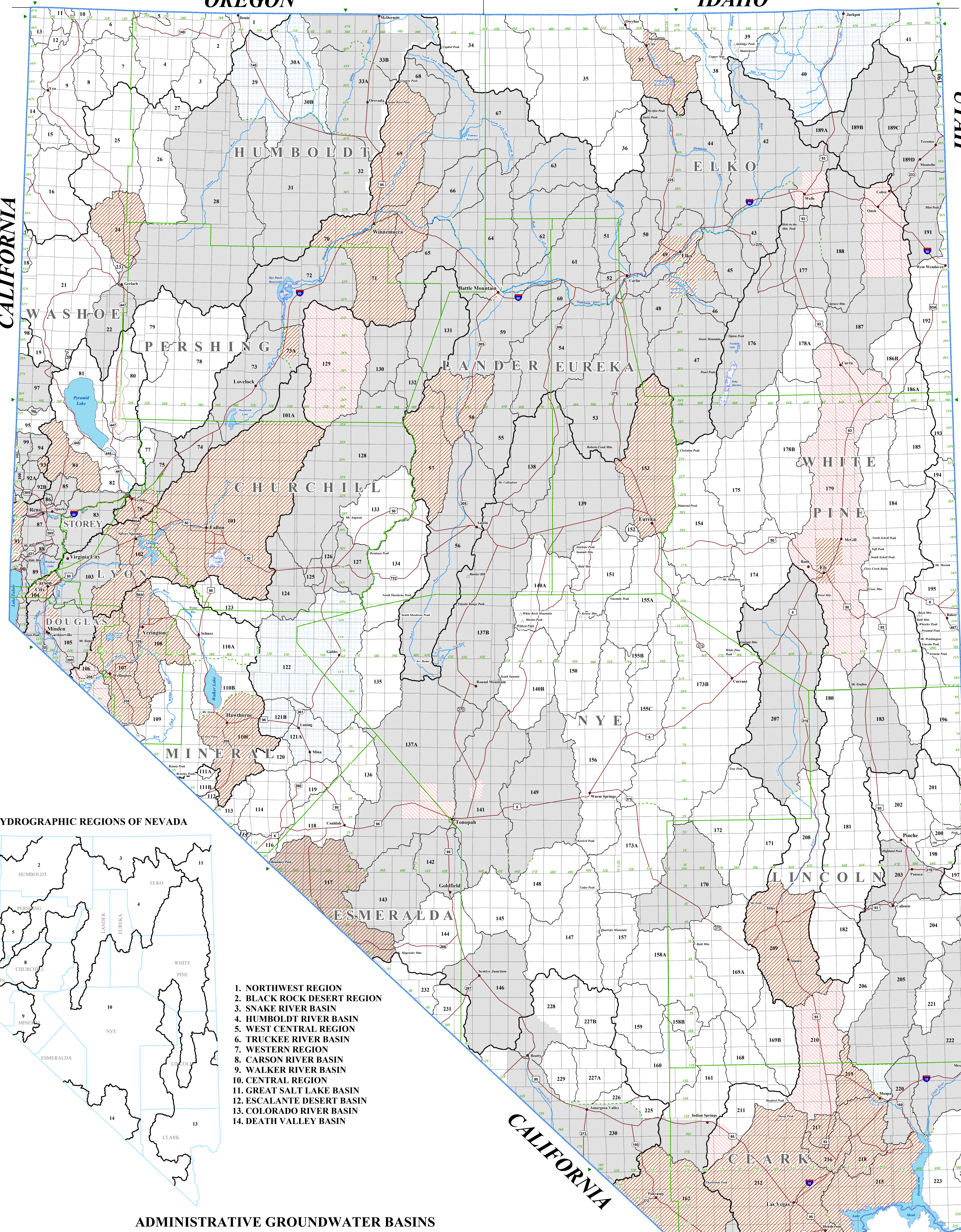
UTAH

UTAH

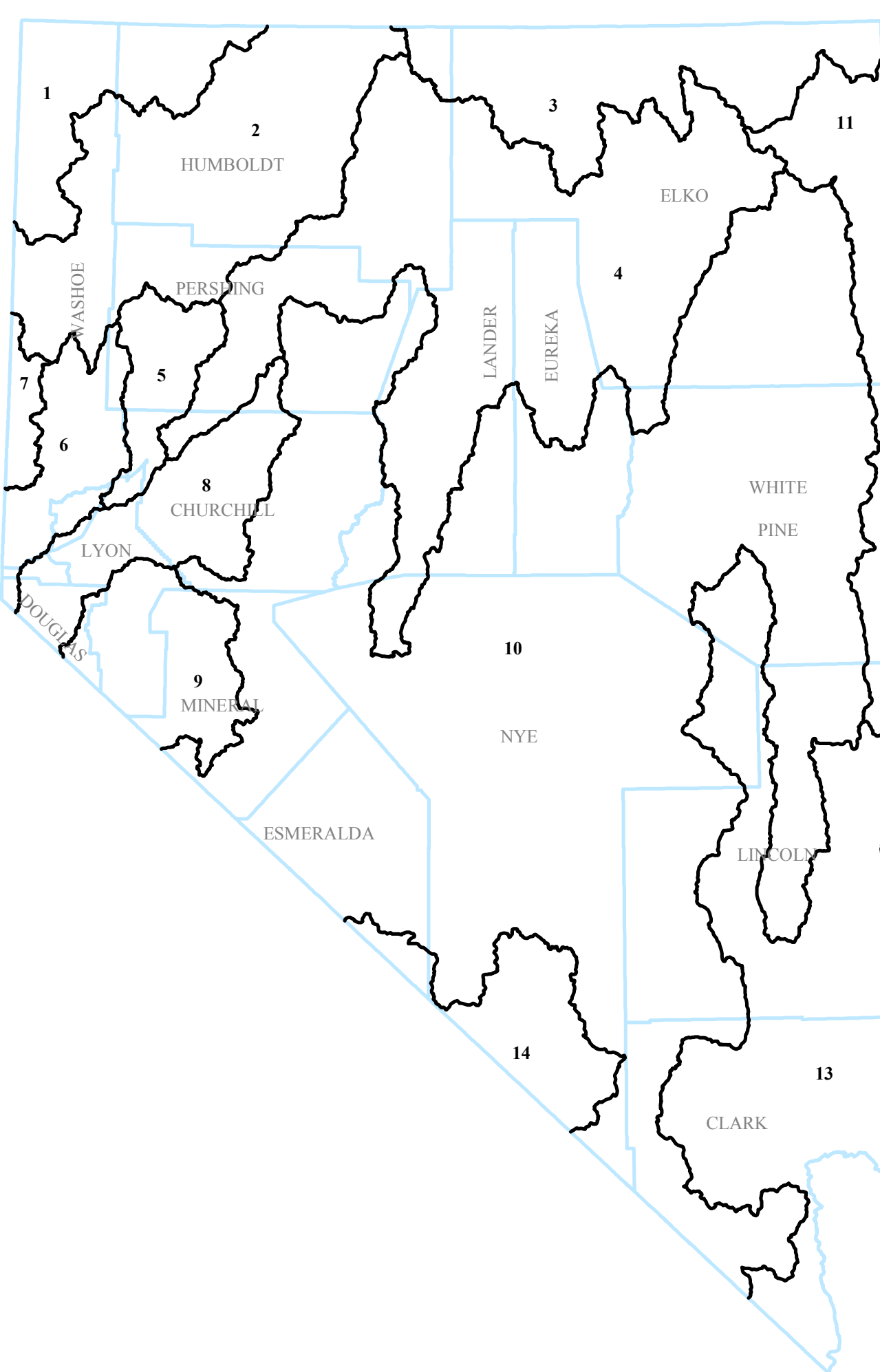
ARIZONA

CALIFORNIA

CALIFORNIA



HYDROGRAPHIC REGIONS OF NEVADA



1. NORTHWEST REGION
2. BLACK ROCK DESERT REGION
3. SNAKE RIVER BASIN
4. HUMBOLDT RIVER BASIN
5. WEST CENTRAL REGION
6. TRUCKEE RIVER BASIN
7. WESTERN REGION
8. CARSON RIVER BASIN
9. WALKER RIVER BASIN
10. CENTRAL REGION
11. GREAT SALT LAKE BASIN
12. ESCALANTE DESERT BASIN
13. COLORADO RIVER BASIN
14. DEATH VALLEY BASIN

ADMINISTRATIVE GROUNDWATER BASINS

1. NORTHWEST REGION

1. PUEBLO V.
2. CONTINENTAL LAKE V.
3. GREELY LAKE V.
4. VIRGIN V.
5. SAGE HEN V.
6. GUNAWAY V.
7. SPOON LAKE V.
8. MASSACHE LAKE V.
9. LONG V.
10. MARY'S FLAT
11. COLDMAN V.
12. MORGUETO V.
13. WALKER V.
14. WARDEN V.
15. BOULDER V.
16. DUCK LAKE V.

2. BLACK ROCK DESERT REGION

17. PILGRIM FLAT
18. PAINTERS FLAT
19. DRY V.
20. SAND V.
21. SMOKE CREEK DESERT
22. SAN EMIDO DESERT
23. GRANITE BASIN V.
24. HUALAPAI FLAT
25. HIGH ROCK LAKE VALLEY
26. MID MEADOW
27. SMOKE LAKE V.
28. BLACK ROCK DESERT
29. PINE FOREST V.
30. KING HORN V.
31. CALICO HOUSE SUBAREA
32. SOD HOUSE SUBAREA
33. DESERT V.
34. SILVER STATE V.
35. QUINN RIVER V.
36. (A) GOROVAS SUBAREA
37. (B) SADERMIT SUBAREA

3. SNAKE RIVER BASIN

34. LITTLE OWYHEE RIVER AREA
35. SOUTHERN OWYHEE RIVER AREA
36. INDEPENDENCE V.
37. OWYHEE RIVER AREA
38. BURNING RIVER AREA
39. CARBIDE RIVER AREA
40. SALMON FALLS CREEK AREA
41. GOODE CREEK AREA
42. MARY'S RIVER AREA
43. STAR VALLEY AREA
44. NORTHERN AREA
45. LAMBLE V.
46. SOUTH FORK AREA
47. HUNTINGTON V.
48. FOLEY CREEK, TENNILE CREEK AREA
49. ELKO SEGMENT
50. SAGE CREEK AREA
51. MAGGIE CREEK AREA
52. MARY'S CREEK AREA
53. PINE V.
54. CRESENT V.
55. CARROLLAKE V.
56. UPPER REESE RIVER V.
57. ANTELOPE V.
58. MIDDLE REESE RIVER V.

5. WEST CENTRAL REGION

75. BRADY'S HOT SPRINGS AREA
76. FRENCH AREA
77. FIREBALL V.
78. GRANITE SPRINGS V.
79. KIMPA V.
80. WINDMILL LAKE V.
81. PRORARY LAKE V.
82. DOGGY FLAT
83. TRACY SEGMENT
84. WARD SPRINGS V.
85. SANDSPRING V.
86. SEN V.
87. TRUCKEE MEADOWS
88. PLEASANT V.
89. WASSON V.
90. LAKE TAHOE BASIN
91. TRUCKEE CANYON SEGMENT

7. WESTERN REGION

92. LEMMON V.
93. (A) WESTERN PART
94. (B) EASTERN PART
95. ANTELOPE V.
96. HIBEL FLAT
97. DRY V.
98. NEWCOMB LAKE V.
99. HONEY LAKE V.
100. SADDLESHOE CREEK V.
101. RED ROCK V.
102. OLD SPRING V.
103. (A) LONG V.
104. (B) CENTRAL PART
105. (C) SOUTHERN PART
106. HAY CREEK V.
107. KAWICH V.
108. EMERANT V.
109. (A) GOROVAS LAKE V.
110. (B) PANOPOSE LAKE V.
111. YUCCA FLAT
112. FREEMAN FLAT
113. INDIAN SPRING V.
114. PARRISH V.
115. MESQUITE V. (SANDY V.)
116. IVANPAH V.
117. (A) NORTHERN PART
118. (B) SOUTHERN PART
119. SMITH V.
120. MASON V.
121. EAST WALKER AREA
122. WALKER LAKE V.
123. (A) SCHURZ SUBAREA
124. (B) LAKE SUBAREA
125. (C) WISSETY FLAT
126. HAWTHORNE SUBAREA

8. CARSON RIVER BASIN

150. CARSON DESERT
151. (A) PACKARD V.
152. CHURCHILL V.
153. DAYTON V.
154. EAGLE V.
155. CARBON V.
156. CARSON DESERT
157. (A) NORTHERN PART
158. (B) CENTRAL PART
159. (C) SOUTHERN PART
160. HAY CREEK V.
161. KAWICH V.
162. EMERANT V.
163. (A) GOROVAS LAKE V.
164. (B) PANOPOSE LAKE V.
165. YUCCA FLAT
166. FREEMAN FLAT
167. INDIAN SPRING V.
168. PARRISH V.
169. MESQUITE V. (SANDY V.)
170. IVANPAH V.
171. (A) NORTHERN PART
172. (B) SOUTHERN PART
173. SMITH V.
174. MASON V.
175. EAST WALKER AREA
176. WALKER LAKE V.
177. (A) SCHURZ SUBAREA
178. (B) LAKE SUBAREA
179. (C) WISSETY FLAT
180. HAWTHORNE SUBAREA

9. WALKER RIVER BASIN

163. MESQUITE V. (SANDY V.)
164. IVANPAH V.
165. (A) NORTHERN PART
166. (B) SOUTHERN PART
167. SMITH V.
168. MASON V.
169. EAST WALKER AREA
170. WALKER LAKE V.
171. (A) SCHURZ SUBAREA
172. (B) LAKE SUBAREA
173. (C) WISSETY FLAT
174. HAWTHORNE SUBAREA

10. CENTRAL REGION

111. ALKALAI V. (MINERAL)
112. (A) NORTHERN PART
113. (B) SOUTHERN PART
114. MONROY V.
115. HEINTON V.
116. TILES MARSH V.
117. ASHBY V.
118. QUEEN V.
119. FISH LAKE V.
120. COALMENS SALT MARSH V.
121. RIBBONS SALT MARSH V.
122. GARFIELD FLAT
123. SODA SPRING V.
124. (A) EASTERN PART
125. (B) WESTERN PART
126. GIBBS V.
127. RAWHIDE FLATS
128. FAYBURN V.
129. STINGAREE V.
130. COPKICK V.
131. EASTGATE VALLEY AREA
132. TRENS V.
133. BENA VISTA V.
134. PLEASANT V.
135. BUTTA V.
136. JERRY V.
137. EDWARDS CREEK V.
138. SMITH CREEK V.
139. WINDMILL LAKE V.
140. PRORARY LAKE V.
141. DOGGY FLAT
142. TRACY SEGMENT
143. WARD SPRINGS V.
144. SANDSPRING V.
145. SEN V.
146. TRUCKEE MEADOWS
147. PLEASANT V.
148. WASSON V.
149. LAKE TAHOE BASIN
150. TRUCKEE CANYON SEGMENT

11. GREAT SALT LAKE BASIN

149. MONITOR V.
150. (A) NORTHERN PART
151. (B) SOUTHERN PART
152. RALSTON V.
153. ALKALAI SPRING V. (ESMERALDA)
154. CLAYTON V.
155. STONSWALL V.
156. SARGENT FLAT
157. CALVELL V.
158. CACTUS FLAT
159. STONE CABIN V.
160. LITTLE FISH LAKE V.
161. ANTELOPE V. (BIRBA & NYE)
162. STEVENS BASIN
163. DIAMOND V.
164. SIBBY V.
165. LITTLE SMOKEY V.
166. (A) NORTHERN PART
167. (B) CENTRAL PART
168. (C) SOUTHERN PART
169. HAY CREEK V.
170. KAWICH V.
171. EMERANT V.
172. (A) GOROVAS LAKE V.
173. (B) PANOPOSE LAKE V.
174. YUCCA FLAT
175. FREEMAN FLAT
176. INDIAN SPRING V.
177. PARRISH V.
178. MESQUITE V. (SANDY V.)
179. IVANPAH V.
180. (A) NORTHERN PART
181. (B) SOUTHERN PART
182. SMITH V.
183. MASON V.
184. EAST WALKER AREA
185. WALKER LAKE V.
186. (A) SCHURZ SUBAREA
187. (B) LAKE SUBAREA
188. (C) WISSETY FLAT
189. HAWTHORNE SUBAREA

12. ESCALANTE DESERT BASIN

187. ESCALANTE DESERT

13. COLORADO RIVER BASIN

188. DRY V.
189. BOSE V.
190. EAGLE V.
191. SPRING V.
192. PATTERSON V.
193. PARKER V.
194. CLOVER V.
195. LOWER MEADOW VALLEY WASH
196. KANE SPRING V.
197. WHITE RIVER V.
198. PARRISH V.
199. PARRIS V.
200. COYOTE SPRING V.
201. THREE LAKES V.
202. (SOUTHERN PART)
203. LAS VEGAS V.

14. DEATH VALLEY BASIN

213. COLORADO RIVER V.
214. PRUE V.
215. BLACK MOUNTAINS AREA
216. GANSET V. (BRY LAKE V.)
217. HEIDEN V. (DORTIP)
218. CALIBORN WASH
219. MIDDLE RIVER SPRINGS AREA (UPPER MOAPA V.)
220. LOWER MOAPA V.
221. TULE DESERT
222. VIRGIN RIVER V.
223. GOLD BUTTE AREA
224. GREEN WOOD BASIN
225. (NON-CONTRIBUTING PART OF THE COLORADO RIVER BASIN)
226. MERCURY V.
227. ROCK V.
228. STEPTOE V.
229. FORTYFIVE CANYON
230. DRY LAKE V.
231. (B) ROCKBOARD MESA
232. OASIS V.
233. CRATER FLAT
234. AMARGOSA V.
235. GRAPEVINE CANYON
236. ORIENTAL WASH

15. MERCURY V.

226. MERCURY V.
227. ROCK V.
228. STEPTOE V.
229. FORTYFIVE CANYON
230. DRY LAKE V.
231. (B) ROCKBOARD MESA
232. OASIS V.
233. CRATER FLAT
234. AMARGOSA V.
235. GRAPEVINE CANYON
236. ORIENTAL WASH

16. ROCK V.

226. ROCK V.

17. STEPTOE V.

228. STEPTOE V.

18. FORTYFIVE CANYON

229. FORTYFIVE CANYON

19. DRY LAKE V.

230. DRY LAKE V.

20. (B) ROCKBOARD MESA

231. (B) ROCKBOARD MESA

21. OASIS V.

232. OASIS V.

22. CRATER FLAT

233. CRATER FLAT

23. AMARGOSA V.

234. AMARGOSA V.

24. GRAPEVINE CANYON

235. GRAPEVINE CANYON

25. ORIENTAL WASH

236. ORIENTAL WASH

NOTE
This map indicates the designation of administrative groundwater basins in the state at the time of publication. For specific information regarding designation orders and the delineation of the administrative groundwater basins the reader should contact the Nevada Division of Water Resources



Department of Conservation and Natural Resources
Office of the State Engineer
Division of Water Resources
901 S. Stewart Street
Carson City, Nevada 89701

