

Status Update



March 2017

Nevada Pretrial Risk (NPR) Assessment

Opportunities for Evidence-based Technical Assistance

Deliberative and Pre-decisional

OJP Diagnostic Center Confidentiality Policy

This document is confidential and is intended solely for the use and information of the U.S. Department of Justice (DOJ) and the Las Vegas Metropolitan Police Department, the Nevada Supreme Court Committee to Study Evidence-based Pretrial Release and its partners as part of an intergovernmental engagement between these entities.

The DOJ Office of Justice Programs (OJP) Diagnostic Center considers all information provided to the Diagnostic Center by the requesting state, local or tribal community or organization to be confidential in nature, including any materials, interview responses and recommendations made in connection with the assistance provided through the Diagnostic Center. Information provided to OJP is presented in an aggregated, non-attributed form and will not be discussed or disclosed to anyone not authorized to be privy to such information without the consent of the state, local or tribal requesting executive, subject to applicable laws.

Booz | Allen | Hamilton

CNA
ANALYSIS & SOLUTIONS

IIR
Institute for Intergovernmental Research

U.S. Department of Justice Disclaimer. This project was supported by Contract No GS-23F-9755H awarded to Booz Allen Hamilton and its partners, the Institute for Intergovernmental Research and CNA, by the Office of Justice Programs, U.S. Department of Justice. Points of view or opinions in this document are those of the author and do not necessarily represent the official position or policies of the U.S. Department of Justice.



Per the preface disclaimer, points of view or opinions in this document do not necessarily represent the official position or policies of the U.S. Department of Justice.

The NPR was developed, tested and validated using local data and adopted by the Committee. Implementation began September 1, 2016 on a pilot basis in four sites

The Diagnostic Center traveled to Reno and Las Vegas in January, 2017 to reviewed proposed modifications and recalibration of the NPR Assessment

Snapshot of changes to NPR: VERSION 2

Adopted changes include:

- ▶ Use misdemeanor convictions as opposed to arrests and adjust weights
- ▶ Use felony convictions as opposed to arrests and adjust weights
- ▶ Use violent convictions as opposed to arrests and adjust weights
- ▶ Reduce unemployment score from 2 points to 1 point
- ▶ Add the presence of landline telephone to cell phone factor
- ▶ Reduce cell/landline phone score from 2 points to 1 point
- ▶ Rescale risk levels as follows:
 - 0 - 4 pts. = Low Risk
 - 5 - 8 pts. = Moderate Risk
 - 9 pts. and above = Higher Risk

Changes produced Version 2 of the NPR Assessment

3. Prior Misdemeanor Convictions (past 10 years)	_____
a. None - 0 pts.	
b. One to five - 1 pt.	
c. Six or more - 2 pts.	
4. Prior Felony/Gross Misd. Convictions (past 10 years)	_____
a. None - 0 pts.	
b. One or more - 1 pt.	
5. Prior Violent Crime Convictions (past 10 years)	_____
a. None - 0 pts.	
b. One - 1 pt.	
c. Two or more - 2 pts.	
6. Prior FTAs (past 24 months)	_____
a. None - 0 pts.	
b. One FTA Warrant - 1 pt.	
c. Two or more FTA Warrants - 2 pts.	
7. Employment Status at Arrest	_____
a. Verifiable Full/Part-time Employment - 0 pts. (e.g. Self-employed, Disabled and receiving benefits, Student, Retired, Military, Stay at Home Parent, etc.)	
b. Unemployed - 1 pt.	
8. Residential Status	Date of Residency: ____/____
a. Nevada Resident - living in current residence 6 months or longer - 0 pts.	
b. Nevada Resident - not lived in same residence 6 months or longer - 1 pt.	
c. Homeless or non-Nevada Resident - 2 pts.	
9. Substance Abuse (past 10 years)	_____
a. Other - 0 pts.	
b. Prior <i>multiple</i> arrests for drug use or possession/alcohol/drunkenness - 2 pts.	
10. Verified Cell and/or Landline Phone	_____
a. Yes - 0 pts. If yes, list #: _____	
b. No - 1 pt.	
TOTAL SCORE: _____	
Risk Level (Circle One): LOW (0-4 pts.) MODERATE (5 - 8 pts.) HIGHER (9+ pts.)	
OVERRIDE?: Yes ___ No ___	

After further discussion, additional modifications were made to adjust for implementation capacity constraints and ability to verify stability factors

Additional modifications include all changes from Version 2 and the following:

- ▶ Consolidation of employment, residency, cell phone/landline scoring items to mitigating verified stability factors and assign a negative one (-1) point score to each factor
- ▶ Rescale risk levels as follows:
 - 0 - 3 pts. = Low Risk
 - 4 – 8 pts. = Moderate Risk
 - 9 pts. and above = Higher Risk
- ▶ Interview, not required

Changes produced Version 3 of the NPR Assessment

Both Versions 2 & 3 have been tested and are equally valid

Snapshot of changes to NPR: VERSION 3

3. Prior Misdemeanor Convictions (past 10 years)	_____
a. None - 0 pts.	
b. One to five - 1 pt.	
c. Six or more - 2 pts.	
4. Prior Felony/Gross Misd. Convictions (past 10 years)	_____
a. None - 0 pts.	
b. One or more - 1 pt.	
5. Prior Violent Crime Convictions (past 10 years)	_____
a. None - 0 pts.	
b. One - 1 pt.	
c. Two or more - 2 pts.	
6. Prior FTAs (past 24 months)	_____
a. None - 0 pts.	
b. One FTA Warrant - 1 pt.	
c. Two or more FTA Warrants - 2 pts.	
7. Substance Abuse (past 10 years)	_____
a. Other - 0 pts.	
b. Prior <i>multiple</i> arrests for drug use or possession/alcohol/drunkenness - 2 pts.	
8. Mitigating Verified Stability Factors (limit of -2 pts. total deduction)	_____
a. Employed, Student or Retired (-1) pt.	
b. Nevada Resident - Living in current residence 6 mos. or longer (-1) pt.	
c. Verified Cell Phone/Landline (-1) pt.	
	TOTAL SCORE: _____

Risk Level (Circle One): **LOW (0-3 pts.)** MODERATE (4 - 8 pts.) HIGHER (9+ pts.) OVERRIDE?: Yes ___ No ___



Each pilot site elected a version to implement between February 13, 2017 through March 13, 2017

Notable Differences

NPR Assessment Version 2

- ▶ Ten scoring Items
- ▶ Risk Levels:
 - Low (0-4 pts.)
 - Moderate (5-8 pts.)
 - Higher (9+ pts.)
- ▶ Interview required

Washoe County
White Pine County

NPR Assessment Version 3

- ▶ Eight scoring items
 - Seven mandatory, one optional
- ▶ Risk Levels:
 - Low (0-3 pts.)
 - Moderate (4-8 pts.)
 - Higher (9+ pts.)
- ▶ Interview *not* required, but preferred

Clark County
Las Vegas Municipal

Results Under Modified Risk Instrument

Item	Version 2		Version 3	
	Washoe County	White Pine County	Clark County	Las Vegas Muni*
Screened Cases	967	9	562	173
Scored Risk Level				
Higher	35%	22%	15%	16%
Moderate	34%	56%	49%	34%
Low	30%	22%	35%	48%
Use of Overrides*				
Upward	100%	N/A	N/A	100%

Most frequently used overrides** include:

- ▶ Mental health
- ▶ Record more severe than scored
- ▶ Other: unable to verify
- ▶ Other: high blood alcohol content

Results: Washoe County

The Diagnostic Center examined case disposition for closed cases in Washoe County (February 2017)

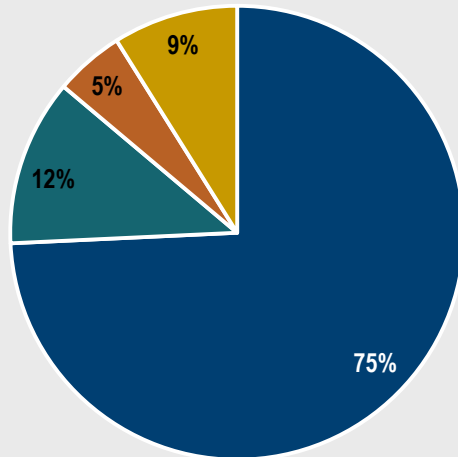
Outcome	Own Recognizance	Supervised Release	Total	Percent*
Successful	393	22	415	73%
FTA	62	6	68	12%
Rearrest	24	3	27	5%
Revocation	46	17	63	11%
Not Released	64	180	244	30%**
Total	589	228	817	101%

**Reflects how many cases were not released due to holds or defendant not posting bail, based on *total* closed cases (817)



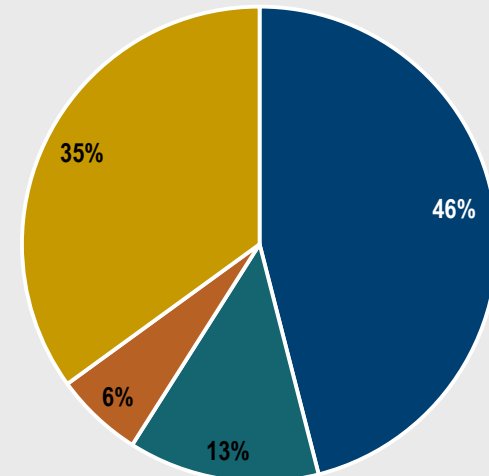
*Based on *actual* released cases (573)

Own Recognizance by Outcome



■ Successful ■ FTA ■ Rearrest ■ Revocation

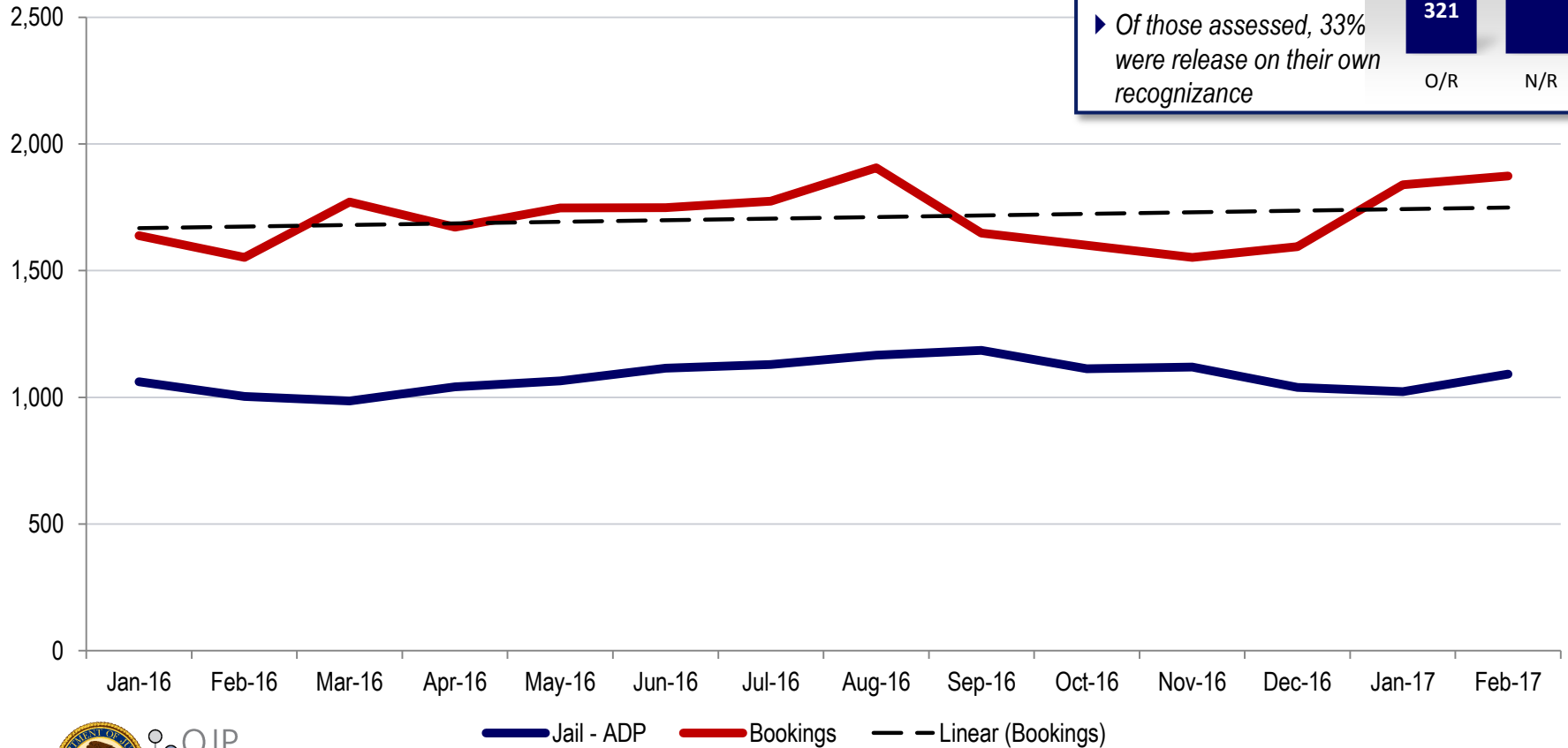
Supervised Release by Outcome



■ Successful ■ FTA ■ Rearrest ■ Revocation

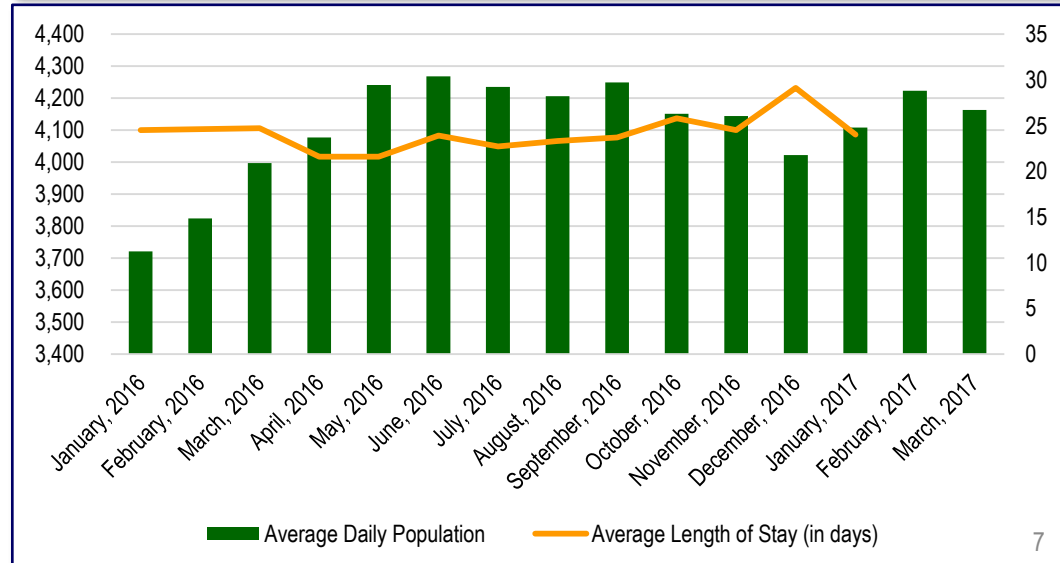
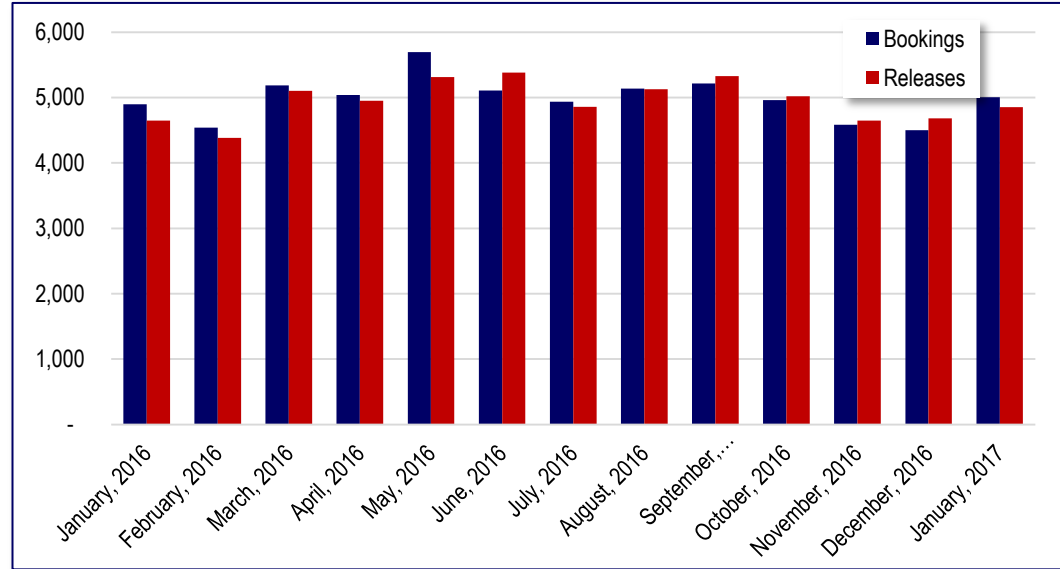
Results: Washoe County (continued)

Washoe County Jail Trends (January 2016 – February 2017)



Results: Clark County Detention Center

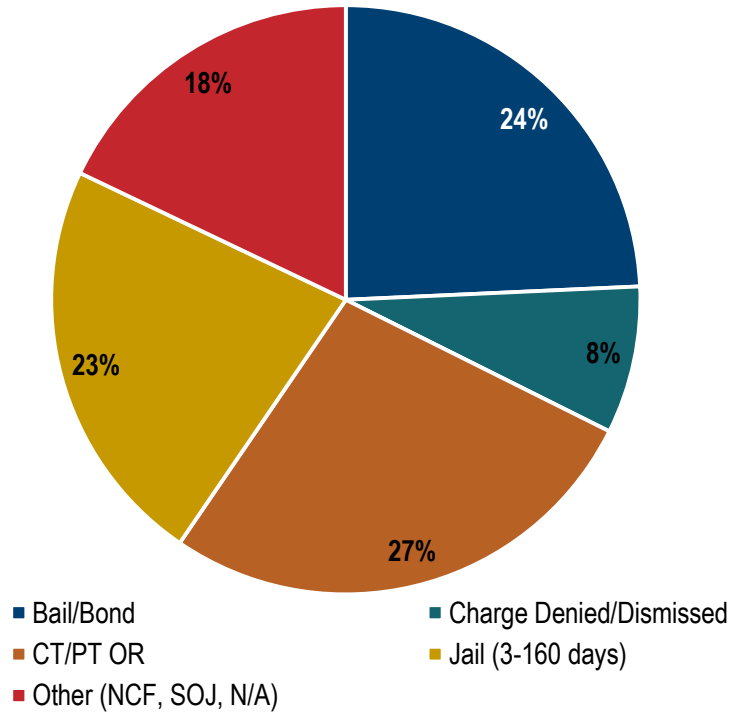
Month, Year	Bookings	Releases	Average Daily Population	Average Length of Stay (in days)
January, 2016	4,899	4,646	3,721	24.5
February, 2016	4,539	4,384	3,824	24.6
March, 2016	5,185	5,104	3,997	24.7
April, 2016	5,039	4,949	4,077	21.6
May, 2016	5,693	5,315	4,241	21.6
June, 2016	5,106	5,382	4,268	23.9
July, 2016	4,934	4,860	4,235	22.7
August, 2016	5,135	5,129	4,206	23.3
September, 2016	5,213	5,328	4,249	23.7
October, 2016	4,959	5,019	4,151	25.8
November, 2016	4,584	4,649	4,144	24.5
December, 2016	4,501	4,683	4,022	29.1
January, 2017	5,004	4,851	4,108	24
February, 2017	N/A	N/A	4,223	N/A
March, 2017	N/A	N/A	4,163	N/A



Results: Releases

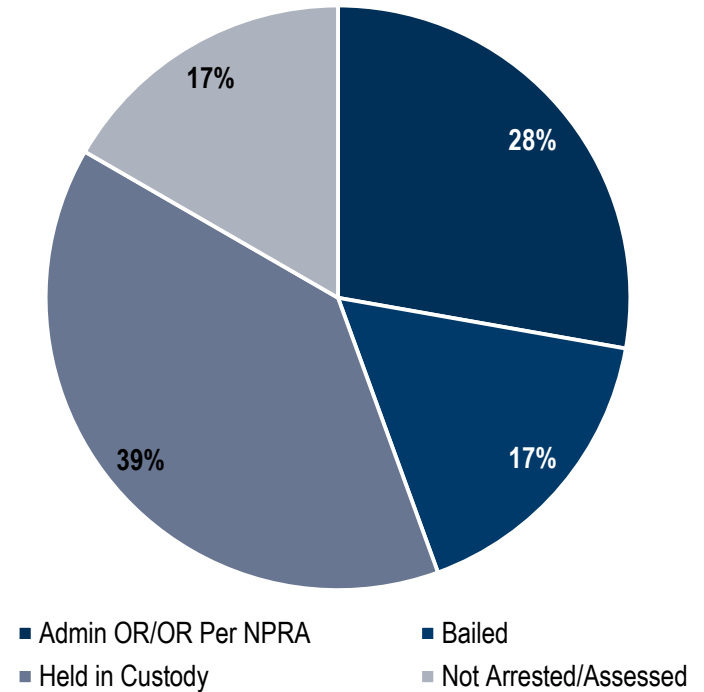
Las Vegas Municipal Courts

Method of Release



White Pine County

Method of Release



OJP Diagnostic Center

Contact Information for the OJP Diagnostic Center

Your Diagnostic Team:

Angela Jackson-Castain, Diagnostic Center Specialist, Angela@OJPDiagnosticsCenter.org

Dr. James Austin, Subject Matter Expert

Stephen Rickman, Diagnostic Center Senior Policy Advisor



Main Telephone Number:

(855) OJP-0411 (or 855-657-0411)



Main Email:

contact@OJPDiagnosticsCenter.org



Website:

www.OJPDiagnosticsCenter.org



Facebook:

www.facebook.com/OJPDC



Twitter

www.twitter.com/OJPDC

Appendix: Overrides

- ▶ Override options on NPR Assessments Versions 2 & 3:
 - Mental Health
 - Disability
 - Gang Member
 - Flight Risk
 - Prior Record more severe than scored
 - Prior Record less severe than scored
 - Other, explain
- ▶ Overrides are completed at the assessor's discretion, enabling risk level to move up or down one single level