

EIGHTH JUDICIAL DISTRICT



Regional Justice Center

EIGHTH JUDICIAL DISTRICT CASELOAD FILINGS AND DISPOSITIONS Fiscal Year 2018

Court	Criminal Filings ^a	Civil Filings	Family Filings ^b	Juvenile Filings ^b	Reopened Cases	Total Cases	Total Disposed	Disp. Rate	Traffic and Parking ^c		
									Cases	Disposed	Disp. Rate
Clark County DC	8,480	22,815	42,545	6,046	25,813	105,699	112,042 ^d	106%	(f)	(f)	(f)
Boulder Justice Court	106	273	-	-	6	385	356	92%	657	677	103%
Bunkerville Justice Court	17	3	-	-	0	20	20	100%	882	928	105%
Goodsprings Justice Court	199	22	-	-	1	222	191	86%	9,359	9,319	100%
Henderson Justice Court	2,634	7,398	-	-	136	10,168	8,620	85%	6,781	6,691	99%
Las Vegas Justice Court	40,834	71,877	-	-	11,774	124,485	120,787	97%	163,287 ^g	171,044 ^d	105%
Laughlin Justice Court	694	222	-	-	0	916	930	102%	5,402	7,569 ^d	140%
Mesquite Justice Court	193	268	-	-	1	462	467 ^d	101%	1	1	100%
Moapa Justice Court	68	14	-	-	1	83	68	82%	1,317	1,243	94%
Moapa Valley Justice Court	134	60	-	-	0	194	159	82%	985	890	90%
N. Las Vegas Justice Court	3,114	8,198	-	-	129	11,441	8,898	78%	965	935	97%
Searchlight Justice Court	78	16	-	-	1	95	82	86%	1,614	1,593	99%
Boulder Municipal Court	368	1	-	-	4	373	343	92%	2,365	2,133	90%
Henderson Municipal Court	5,651	140	-	-	8	5,799	5,849	101%	21,138	21,395	101%
Las Vegas Municipal Court	20,640	1,730	-	-	109 ^g	22,479	24,928	111%	64,744	62,723	97%
Mesquite Municipal Court	667	5	-	-	3	675	556	82%	1,819	1,610	89%
N. Las Vegas MC	4,377	179	-	-	1,036	5,592	4,779	85%	20,336	17,140	84%
TOTAL	88,254	113,221	42,545	6,046	39,022	289,088	289,075	100%	301,652	305,891	101%

^a Criminal includes felony, gross misdemeanor, non-traffic misdemeanor, and criminal appeals (District Court only) filings.

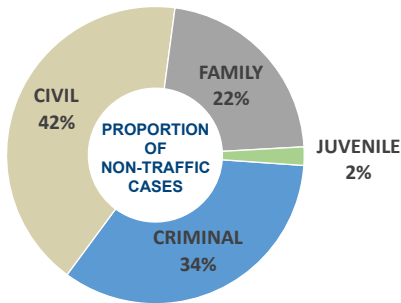
^b Family and juvenile case types only heard in District Courts.

^c Traffic and parking include juvenile traffic statistics.

^d Include administrative closures.

^e Juvenile traffic violations handled and reported by Justice Courts.

^g Reopened cases under-reported or not reported.



QUICK FACTS:

75% OF STATEWIDE NON-TRAFFIC CASELOAD

67% OF STATEWIDE TRAFFIC CASELOAD



District Demographics

Population: 2,193,818^a

Geographic Size: 7,891 sq. mi.^b

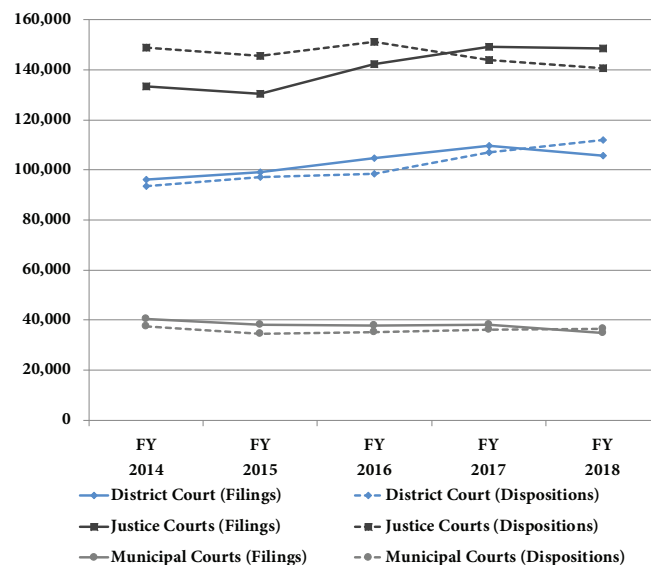
Population Density: 278/sq. mi.

Most Populous Township: Las Vegas

^a Source: Nevada State Demographer

^b Source: U.S. Census Bureau

EIGHTH JUDICIAL DISTRICT NON-TRAFFIC FILINGS AND DISPOSITIONS, FY 2014-18



NON-TRAFFIC TOTAL CASES PER JUDGE

