

SIXTH JUDICIAL DISTRICT



SIXTH JUDICIAL DISTRICT CASELOAD FILINGS AND DISPOSITIONS Fiscal Year 2018

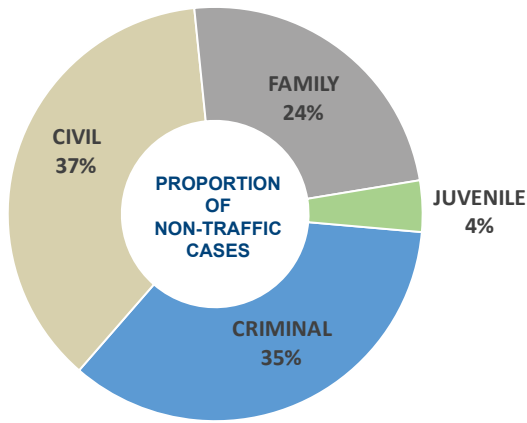
Court	Criminal Filings ^a	Civil Filings	Family Filings ^b	Juvenile Filings ^b	Reopened Cases	Total Cases	Total Disposed	Disp. Rate	Traffic and Parking ^c		
									Cases	Disposed	Disp. Rate
Humboldt County DC	95	222	353	100	185	955	1,063 ^d	111%	105	152 ^d	145%
Union Justice Court	684	602	-	-	8	1,294	1,231	95%	6,812	6,538	96%
TOTAL	779	824	353	100	193	2,249	2,294	102%	6,917	6,690	97%

^a Criminal includes felony, gross misdemeanor, non-traffic misdemeanor, and criminal appeals (District Court only) filings.

^b Family and juvenile case types only heard in District Courts.

^c Traffic and parking include juvenile traffic statistics.

^d Include administrative closures.



QUICK FACTS:

<1% OF STATEWIDE NON-TRAFFIC CASELOAD

2% OF STATEWIDE TRAFFIC CASELOAD



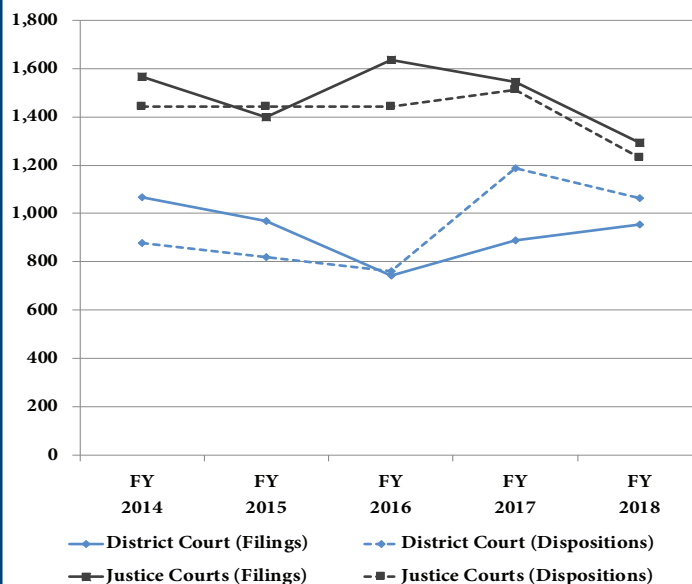
District Demographics

Population: 16,978^a
 Geographic Size: 9,641 sq. mi.^b
 Population Density: 2/sq. mi.
 Most Populous Township: Union

^a Source: Nevada State Demographer

^b Source: U.S. Census Bureau

SIXTH JUDICIAL DISTRICT NON-TRAFFIC FILINGS AND DISPOSITIONS Fiscal Years 2014-18



NON-TRAFFIC TOTAL CASES PER JUDGE

